

# **Pandanet Go Beginners Academy**

Getting Started Guide

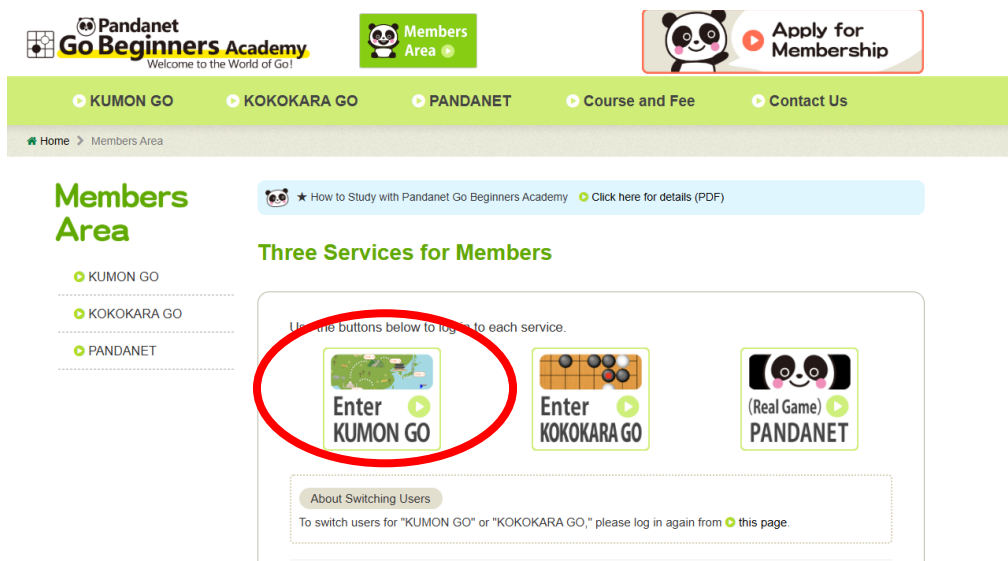
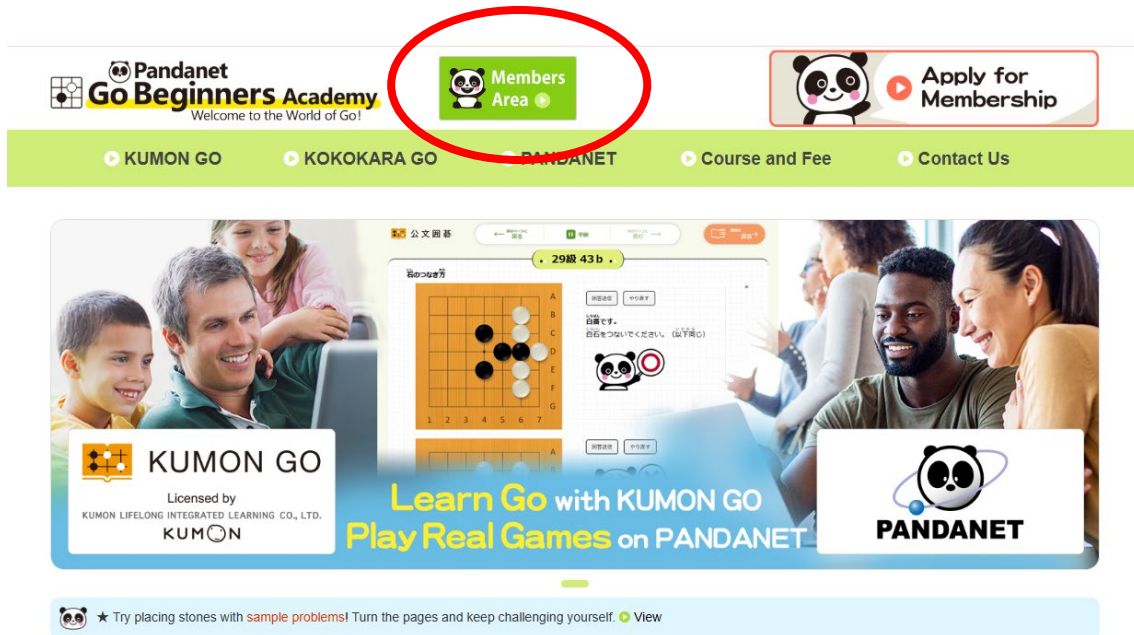
① KUMON GO

② KOKOKARA GO

③ PANDANET

# ① KUMON GO

① On the Pandanet Go Beginners Academy homepage, click “Members Area”, then select “KUMON GO Login”.



② In the login form, enter your User ID and password, then sign in.

③ The KUMON GO curriculum covers 30-kyu through 13-kyu. Start with 30-kyu.

Click “30-kyu” to open the lesson.

The screenshot displays the KUMON GO user interface. At the top, there is a navigation bar with icons for Lessons, Review, Dojo, My Page, and HP. On the left side, a user profile card for 'KUMON034' shows a current rank level of 13 kyu, today's study time of 00 hours and 16 minutes, and a 100% completion status for lessons. The main area features a world map with a dotted path indicating the curriculum progression from 25 kyu to 30 kyu. The 30 kyu level is highlighted with a red circle. A panda character is visible in the bottom right corner of the map area, with a speech bubble that says 'Let's keep working together today!'.

④ On the lesson page, click page 1 to begin.

**Lesson** | 30Rank

**Rank** | Achievement Level | 85%

Achievement Test | Result

Certificate | Medal

**Target**

What is Go? How is the winner decided? You will learn the tools used and basic rules.

Go is a game where the player with the larger territory wins. Let's keep learning and growing together!

**Table of Contents** | Completion Status | 100%

Intro What is Go | Read

21 a How to Capture Stones 2 | Read

41 a How to Capture Stones 4 | Read

61 a How to Escape | Read

81 a Who Wins and by How ... | Read

11 a How to Capture Stones 1 | Read

31 a How to Capture Stones 3 | Read

51 a How to Capture Stones 5 | Read

71 a How to Escape and Co... | Read

91 a Who Wins and by How ... | Read

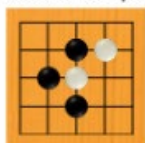
- ⑤ Each level includes explanation pages and practice problems to deepen your understanding and check your progress.

## 30 Kyu Introduction

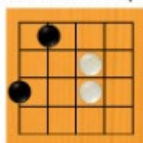
### About the basic rules

**How to Place the Stones**  
(Place them on the points where the lines intersect)

Correct Example



Incorrect Example



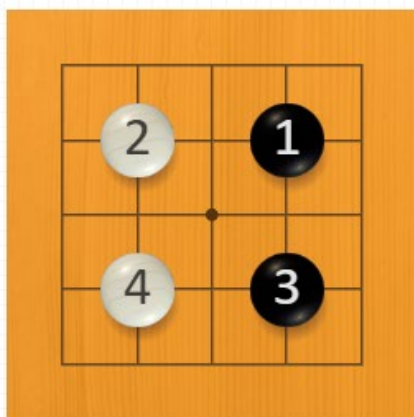
① Go (igo) is a game in which two people play a Game (match) using a Go board and Go stones.

② When starting a Game, usually the person holding the black stones plays first. (In a handicap game, White plays first.)

③ Go stones are played on the intersections where the vertical and horizontal lines cross.

④ Once a Stone is played, it cannot be moved.

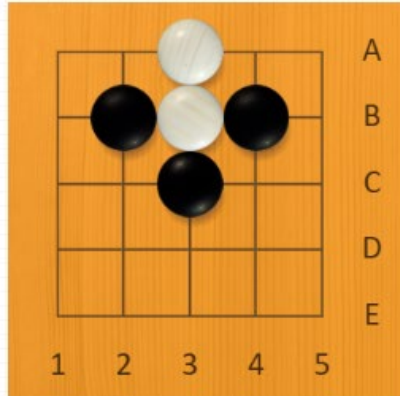
### About turn order



In Go, the player who goes first is called "sente", and plays with black stones. The other player is "gote", and plays with white stones. Players take turns: black, white, black, white.

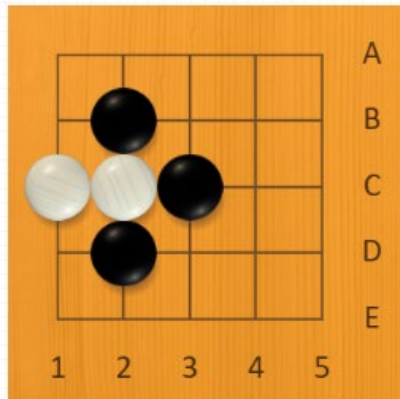
30 Kyu 41 a

Capturing Stones in Atari



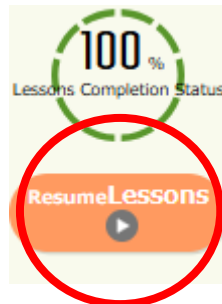
Look carefully at whether you are Black or White, and make an Atari.

**Black to play.**  
Make an Atari. (Same as below)



**Black to play.**

- ⑥ **Your progress is saved automatically. When you finish, simply close the page. The next time you sign in, click “Resume Study Material” at the bottom left of the homepage to continue where you left off.**

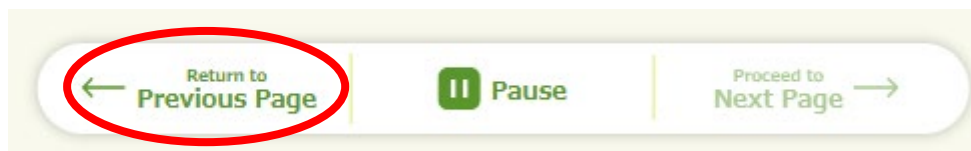


The learning materials include explanation pages and practice problems.

For practice problems, place the stones on the board and click “Submit Answer”. Some problems refer back to the previous explanation, so return to the previous page when needed.

As you advance, the problems will require multiple moves and become progressively more challenging.

If you want to keep a diagram for later review, take notes, bookmark the page, or save a screenshot.



### ⑦ **Achievement Test**

After completing all lessons for a level, take the Achievement Test. If you pass, you can move on to the next level.

#### **Rank Certification**



Please select your answer within one minute per question.

You will be certified if you answer 17 out of 20 questions correctly.

A medal will be awarded for answering quickly and accurately.

## ⑧ Using the navigation bar



**Lessons:** The main learning materials.

**Review:** Save and manage items for later review.

**Dojo:** Look up Go proverbs and terminology.

**My Page:** View your certificates and medals, and change your character's outfit.

**HP:** Return to the homepage.

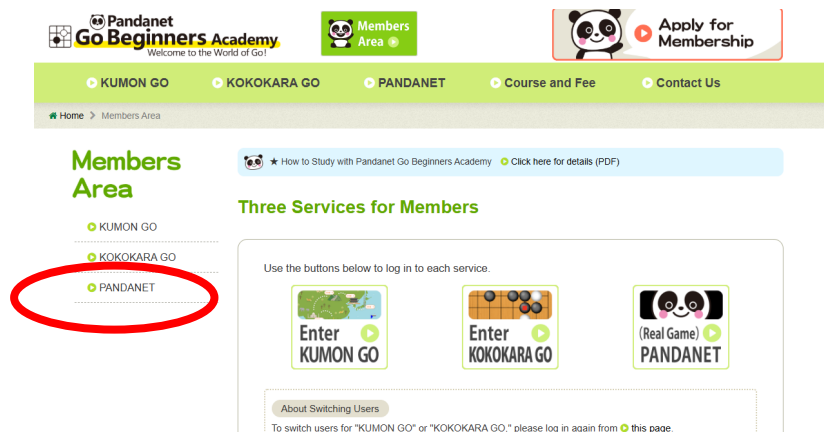


## ② KOKOKARA GO

- ① KOKOKARA GO lets you practice real-game situations from positions in the opening, middle game, and endgame.



Before using KOKOKARA GO, download the Go client software “GoPanda2” from the website.



## PANDANET

- On PANDANET, you can play online games against real opponents using GoPanda2.
- If you are not confident playing against other players yet, try robots like Roboto and Pbot at various levels to get comfortable with the game.

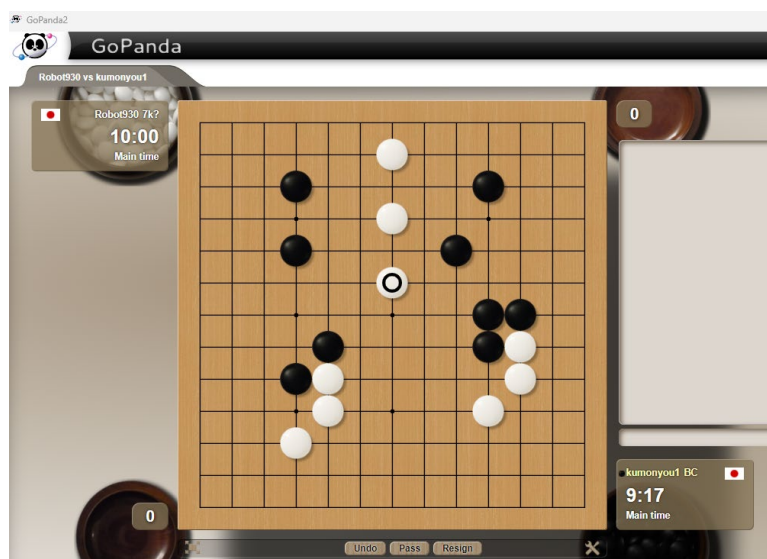
▶ Download the dedicated software (GoPanda2 / Free)

▶ User Guide

② Click the problem list for the level that best suits you, then sign in with your User ID and password.

KUMON GO Level	Main Topics	
30 kyu	—	—
29 kyu	<ul style="list-style-type: none"><li>• Connecting (e.g. bamboo joint) and cutting</li><li>• Basics of escaping</li></ul>	▶ Problem List
28 kyu	<ul style="list-style-type: none"><li>• Basics of life and death (two eyes, false eye, etc.)</li><li>• Basic capturing techniques (e.g. net)</li></ul>	▶ Problem List
27 kyu	<ul style="list-style-type: none"><li>• Introduction to basic moves and shapes</li><li>• Practical use of one-space extensions such as nobi and oshi</li><li>• Basics of ko and life-and-death (1): seki, three-space nakade, etc.</li></ul>	▶ Problem List

③ Click a problem to launch GoPanda2 and open the board. When there are no more moves to play, click “Pass” to finish. You can restart and practice as many times as you like.



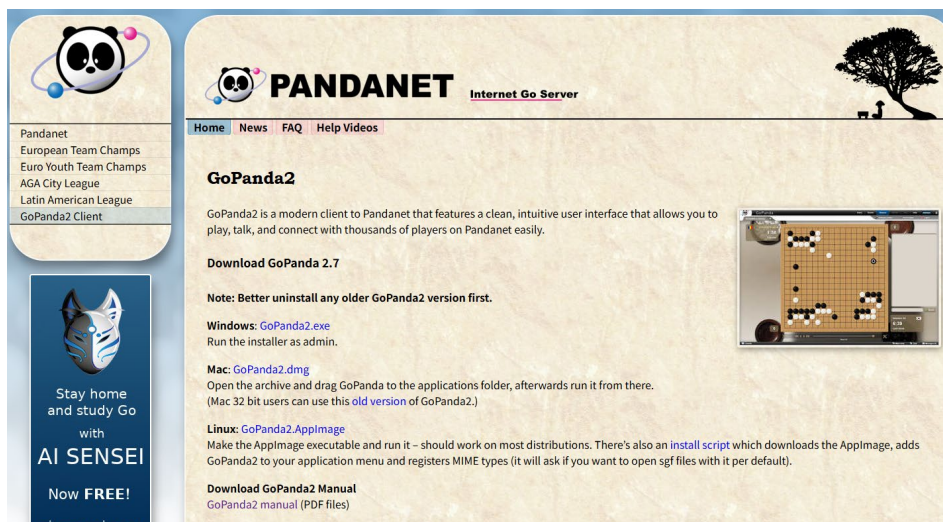
## ③ PANDANET

---

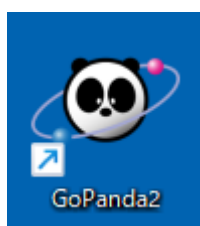
- ① After studying with KUMON GO and KOKOKARA GO, try playing against a robot on PANDANET.
- ② Click “PANDANET” on the website.



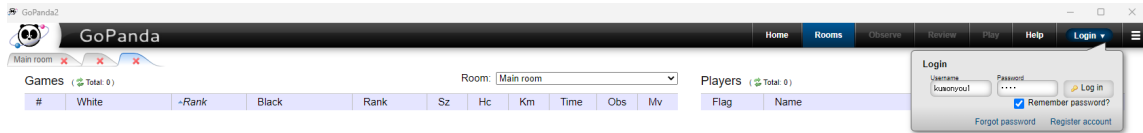
- ③ Install the game software Gopanda2 from the page according to your OS. After installation, an icon will appear on your desktop.



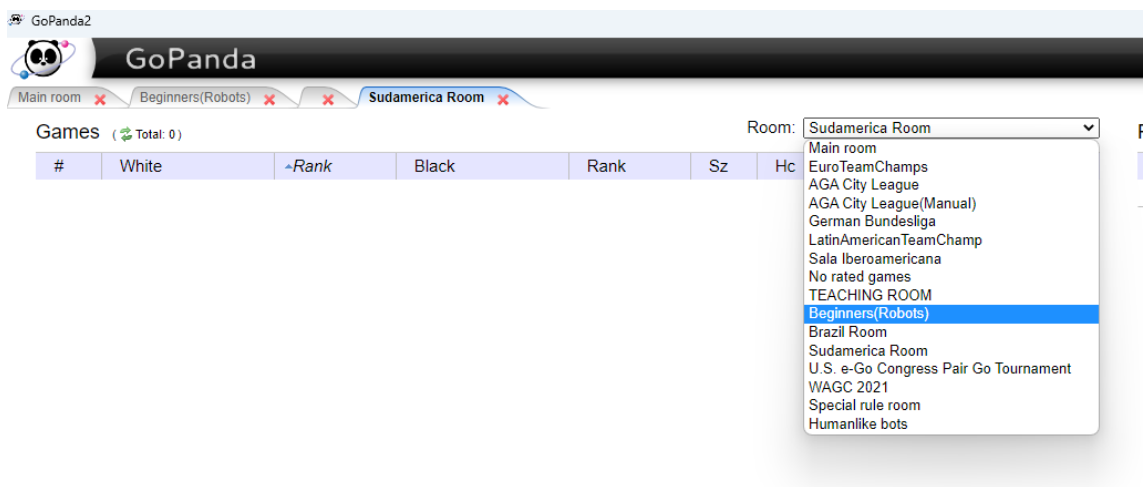
The screenshot shows the Pandanet website interface. On the left, there is a navigation menu with the Pandanet logo and links to 'European Team Champs', 'Euro Youth Team Champs', 'AGA City League', 'Latin American League', and 'GoPanda2 Client'. Below this is a blue banner for 'AI SENSEI' with the text 'Stay home and study Go with AI SENSEI Now FREE!'. The main content area features the Pandanet logo and 'Internet Go Server' text. A navigation bar includes 'Home', 'News', 'FAQ', and 'Help Videos'. The main heading is 'GoPanda2', followed by a description: 'GoPanda2 is a modern client to Pandanet that features a clean, intuitive user interface that allows you to play, talk, and connect with thousands of players on Pandanet easily.' Below this is a 'Download GoPanda 2.7' section with a note: 'Note: Better uninstall any older GoPanda2 version first.' It lists download links for Windows ('GoPanda2.exe'), Mac ('GoPanda2.dmg'), and Linux ('GoPanda2.AppImage'). A 'Download GoPanda2 Manual' link is also present. A small screenshot of the GoPanda2 interface is shown on the right.



- ④ Click the desktop icon to launch GoPanda2. In the login form at the top right, enter your User ID and password.



- ④ Select “Beginner Room (Robot)” from the room list.



- ⑤ We recommend starting on a 9×9 board. Choose your turn and handicap settings as you like.

### Match with Robot405 ✖

Board Size  
9x9

Your color  
Black

Handicap  
4

Main time minutes  
1

Canadian byoyomi  
 Japanese byoyomi  
 Delay  
 Timeouts

Minutes per period  
10

Stones per period  
25

